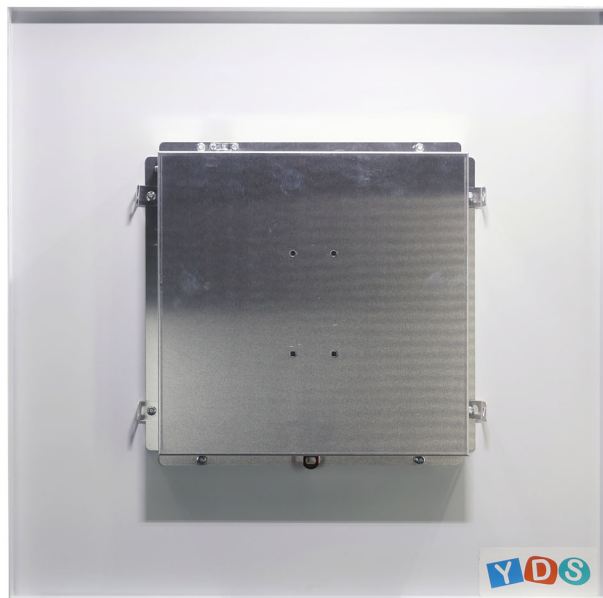
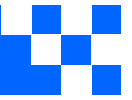


**YDS-SCE-045****Suspended Ceiling Enclosure Solutions for the Aruba, Cisco,  
Mist, Meraki, Access Points**

Front View



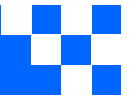
Back View

**YDS-SCE-045****Suspended Ceiling Enclosure Solutions for the Aruba, Cisco,  
Mist, Meraki, Access Points****Specifications**

<b>Ceiling Enclosure Model No.</b>	<b>YDS-SCE-045</b>
<b>Application</b>	Carpeted Space, Indoor Wi-Fi
<b>Color</b>	White or Customization
<b>Compatibility</b>	Aruba/HP AP-314 Aruba/HP AP-315 Aruba/HP AP-344 Aruba/HP AP-345 Aruba/HP AP-504 Aruba/HP AP-514 Aruba/HP AP-515 Aruba/HP AP-518 Aruba/HP AP-535 Aruba/HP AP-555 Aruba/HP AP-565 Aruba/HP AP-567 Aruba/HP AP-635 Aruba/HP AP-655
	Cisco 3802e Cisco 3802i Cisco 9162i Cisco 9164i Cisco 9166i Cisco Catalyst 9105AXI Cisco Catalyst 9120AXE Cisco Catalyst 9120AXI Cisco Catalyst 9136i Cisco IW9167E Cisco Catalyst 9130AXI

**YDS-SCE-045****Suspended Ceiling Enclosure Solutions for the Aruba, Cisco,  
Mist, Meraki, Access Points****Specifications**

<b>Compatibility</b>	Mist AP32 Mist AP32E Mist AP33 Mist AP41 Mist AP41E Mist AP43 Mist AP43E Mist AP45
	Meraki MR46 Meraki MR56
<b>Enclosure Style</b>	Suspended Ceiling (Includes tabs for securing to building structure)
<b>Indoor/Outdoor</b>	Indoor
<b>Installation Type</b>	Suspended Ceiling Grid; AP Mounting Feet onto Included Mounting Bracket
<b>Lock Type</b>	Key Lock or Customization
<b>Material</b>	Aluminum or Customization
<b>Technology</b>	802.11ac, 802.11ax, 802.11n
<b>Dimensions</b>	603.25mm x 603.25mm x 38.1mm

**YDS-SCE-045**

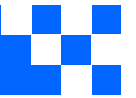
**Suspended Ceiling Enclosure Solutions for the Aruba, Cisco,  
Mist, Meraki, Access Points**



**YDS-SCE-045**

**Suspended Ceiling Enclosure Solutions for the Aruba, Cisco,  
Mist, Meraki, Access Points**



**YDS-SCE-045**

**Suspended Ceiling Enclosure Solutions for the Aruba, Cisco,  
Mist, Meraki, Access Points**

